

## Refrigeration Equipment 3-Door Sandwich/Salad Prep Table 72" Long 18-1/6 Pan

ITEM # \_\_\_\_\_

MODEL # \_\_\_\_\_

NAME # \_\_\_\_\_

SIS # \_\_\_\_\_

AIA # \_\_\_\_\_



738258 (KCHST70.18)

3-Door Sandwich/Salad Prep  
Table 72" Long 18-1/6 Pan

### Short Form Specification

**Item No.** \_\_\_\_\_

3-door sandwich/salad refrigerated preparation table. Exterior back panel and exterior bottom panel in galvanized steel, exterior side and top panels in 430 stainless steel; interior back, top panels and interior bottom panel in 304 stainless steel, worktop in 304 stainless steel. Built-in refrigeration unit and an insulated lid to maintain food freshness. Fin & Tube Condenser improves performance in high-temperature environments. Automatic Defrost Cooling System to provide worry-free performances. Full-depth cutting board of 71x11.4x0.5 in. Control panel, Vinyl-Coated Steel adjustable shelves, removable door gaskets and self-closing doors with 90-degree stay-open feature.

Temperature range: +33/+41°F.

R290 gas in the refrigeration circuit.

ETL Safety and Sanitation certifications.

3/5 Years warranty.

### Main Features

- External temperature display.
- Removable gasket for easy cleaning operations.
- Fin & Tube Condenser improves performance in high temperature environments.
- Automatic Defrost Cooling System provides worry-free performance.
- Electronic Temperature Control, quick and simple to set, with control display for easy monitoring.
- Full Depth cutting board.
- Cabinet completely insulated with high density polyurethane for low environmental impact.
- Heavy duty Vinyl coated steel shelves.
- Adjustable shelves for flexible storage
- Removable rubber bumper guards for airflow spacing and shock absorption
- Back bottom mounted cooling unit guarantee an easy access and cleaning.
- Integrated polyethylene (PE) cutting board included for food-safe, durable prep surface

### Construction

- Stainless steel interior and exterior, durable and easy to clean for daily commercial use.
- White polystyrene interior side panels, for high impact resistance
- Holds 18 1/6 pans.
- Insulated lid maintains food freshness.
- Heavy duty casters.
- Pre-wired heavy duty power cord.
- Heavy duty door hinges.
- Magnetic gasket removable without tools for easy cleaning.
- Self-closing door with 90-degree stay-open feature.
- Stainless steel worktop, durable functionality

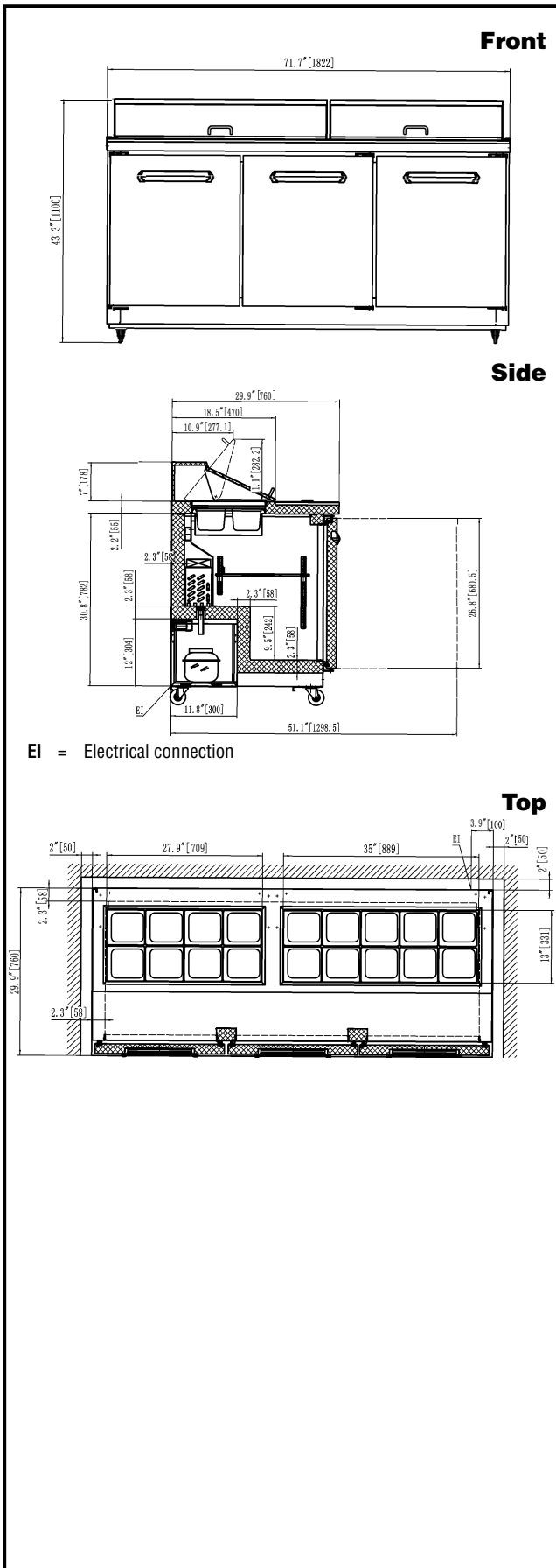
### Sustainability

- CFC and HCFC free, highly ecological refrigerant type: R290 (ecological gas in foam: cyclopentane). Hydrocarbon refrigerant gas R290 for the lowest environmental impact (GWP=3), to reduce green house and ozone depletion effects.
- High efficiency components to minimize the energy consumption still guaranteeing the highest performances.
- Hydrocarbon refrigerant gas R290 for the lowest environmental impact (GWP=3) - CFC and HCFC free.
- 58 mm insulation for energy saving

### Optional Accessories

- Drawers Kit for L/R section of 48" & 72" Mega Top, Salad Top, Undercounter Refrigerator, and Work Top Refrigerator PNC 880616
- Drawers Kit for Center Section of 72" Mega Top, Salad Top, Undercounter Refrigerator, and Work Top Refrigerator PNC 880699

APPROVAL: \_\_\_\_\_



## Electric

Supply voltage:	115 V/1 ph/60 Hz
Electrical power, max:	0.72 kW
Plug type:	NEMA 5-15

## Capacity:

Gross capacity:	18 cu.feet
-----------------	------------

## Key Information:

Number and type of grids (included):	3 - Vinyl-Coated steel
Number and type of pans (included):	18 - Plastic
Number and type of cutting board (included):	1 - Polyethylene (PE)
Warranty:	3 / 5 years
Door hinges:	1 Left+2 Right
External dimensions, Width:	71 3/4" (1822 mm)
External dimensions, Depth:	29 15/16" (760 mm)
External dimensions, Height:	43 5/16" (1100 mm)
Number and type of doors:	3 Full
Internal Dimensions (depth):	23 13/16" / (605 mm)
Internal Dimensions (height):	23 1/2" / (597 mm)
Internal Dimensions (width):	66 7/16" / (1687 mm)
Shipping height:	47 1/4" (1200 mm)
Shipping weight:	443 lbs (201 kg)
Shipping volume:	63.12 ft <sup>3</sup> (1.79 m <sup>3</sup> )
Type of external material:	Stainless Steel
Type of internal material:	Polystyrene
Approvals	ETL C&US;ETL SANITATION

## Refrigeration Data

Condenser type:	Fin & tube
Operating temperature min.:	32 °F
Compressor power:	1/3 hp
Operating temperature max.:	41 °F
Defrost type:	Auto Defrost

## Sustainability

Current consumption:	4.3 Amps
Refrigerant type:	R290
GWP Index:	3
Refrigerant weight:	95 g

